

Maple Installation Instructions

Required tools:

- 1) Network access to the fileshare site
- 2) Blank CD to create installation disc
- 3) DVD or CD drive that can burn a disc
- 4) Software utility that can work with ISO files (Mac users won't need this utility)

Step 1. Request access to the software distribution fileshare site - <\\mcacd3\Maple> by calling 515-294-4000.

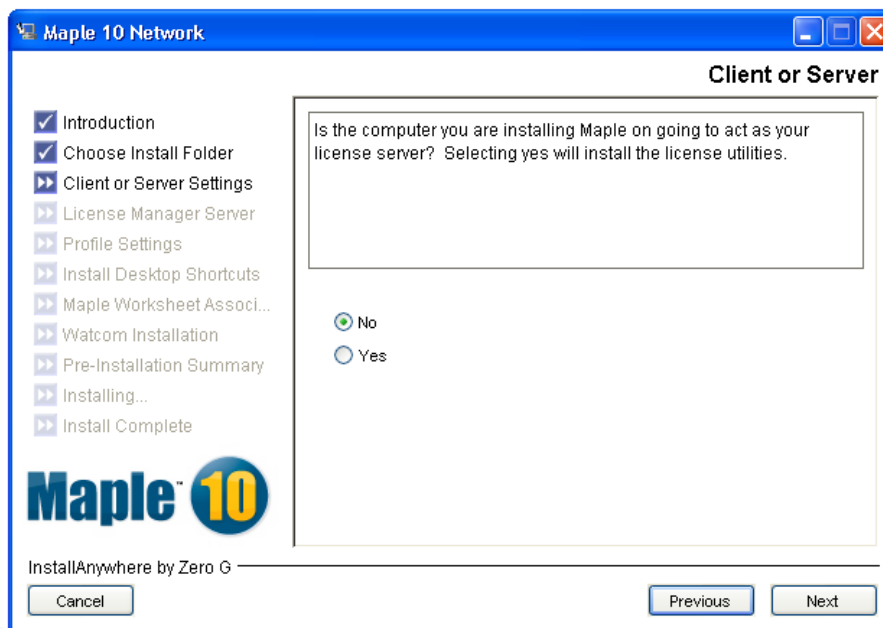
Step 2. Log into the network fileshare using Windows Explorer. (Tip: A reboot is required to gain your new access privileges.) Locate the software folders. There are separate folders for Windows, Macintosh and Linux. Choose the folder that contains the software needed.

Windows users:

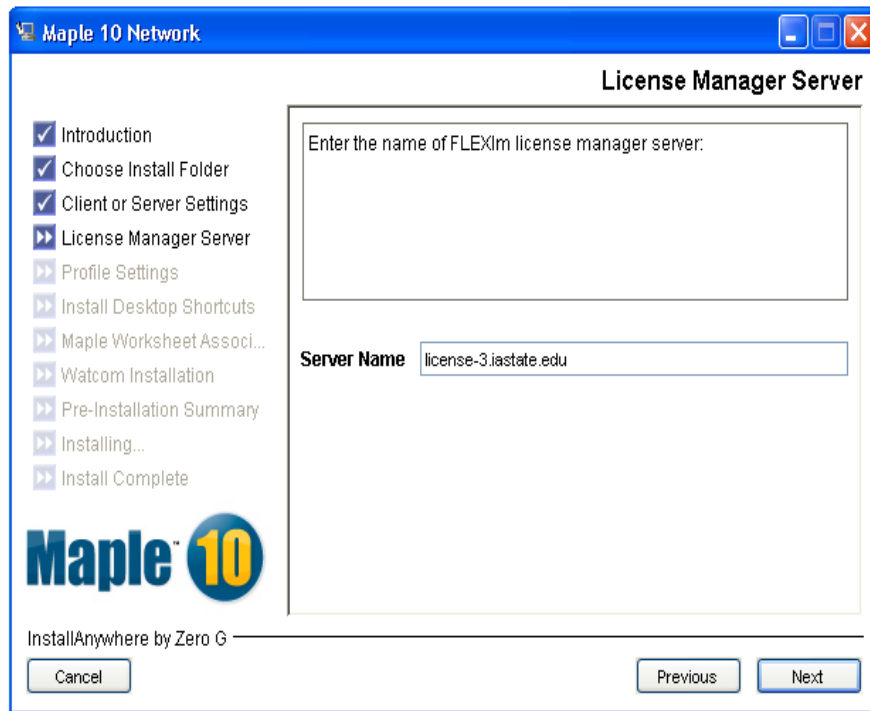
Step 3. Create the installation disc. The Windows software is stored as an ISO, which is a CD-ROM image. A disc writer utility is needed to read the ISO file and a CD-ROM burner to create an installation disc. If you don't have a disc writing utility, a shareware utility called ISO recorder is available at <http://isorecorder.alexfeinman.com/isorecorder.htm>. This software will read the ISO file on the network and burn a disc on your local machine. This resulting disc will be an installation disc for the Maple software.

Step 4. Install the Maple software. Insert the Maple 10 Network - Windows that you have just created into the CD-ROM drive. The Maple installation process will automatically begin. If the Maple installation does not automatically start, locate and double-click D:\windows\Disk1\InstData\VM\WinNetworkInstaller.exe (D is the CD-ROM drive that contains the Maple 10 disc).

4a. Specify the network license server. When prompted, select the "NO" radio button:



4b. License server name. The FlexLm license server for Maple is **license-3.iastate.edu**. When prompted, enter the name of the license server:



Step 5. Complete Maple installation. To complete the Maple 10 installation, select the default values on all remaining screens.

Macintosh users:

Step 3. Copy the software from the fileshare location to your local machine. The Macintosh version of the Maple software is stored in a .DMG format. Click on the software icon and drag it onto your machine.

Step 4. Complete the Maple for Macintosh installation.

If you have questions about Maple installation, contact the Solution Center at 515-294-4000 or solution@iastate.edu.